

Central Bohemia Region

Facts & Figures

Central Bohemia Region

Contact details:

Regional Authority of the Central Bohemia Region
Zborovská 11
150 21 Praha 5
tel.: +420 257 280 111
fax: +420 257 280 203
e-mail: info@kr-s.cz
www.kr-stredocesky.cz, www.middleczech.cz

Central Bohemia Region



Introductory Word

Dear readers,

You have just got hold of a brochure with an objective to introduce the Central Bohemia Region to you at least in basic facts and figures, to summarily mention its main priorities and significant statistical data to acquaint you with its basic structure and competences in the individual areas.

Apart from the basic statistical data, you will also get information from the individual areas of importance such as medical care, education, transport or ecology. I hope that the brochure will to a certain extent acquaint you with the significance and importance of the Central Bohemia Region.

Leaving the figures and facts aside, I should not forget to mention the fact that the territory of the Central Bohemia Region was already in time immemorial the centre of the Czech State. It consisted of the Premyslide estate, whereby the decisive battle of the Premyslides and the Slavníkov clan. Subsequently, the territory of the modern day Central Bohemia served the rulers as a recreation area but later also as a place where the most important decisions of the rulers were made. Only at random, we can mention the seats such as Karlštejn (Charles IV.), Křivoklát (Wenceslas IV.), Konopiště (Francis



Ferdinand d'Este), Lány (T. G. Masaryk, and others...). A number of significant and valuable historical monuments are found in the territory of the Central Bohemia Region.

But our region also offers places where the exquisite beauty of Central Bohemia nature is supplemented by an offer of abundant leisure opportunities. For instance, extensive well-maintained golf courses which are eighteen in total; further, 205 kilometres of well-kept cycling routes which cross the Central

Bohemia at the most picturesque places.

Dear readers, I wish that this brochure will give you new knowledge about the Central Bohemia Region and I believe that you will get many unforgettable experiences from a visit to our region.

Governor of the Central Bohemia Region, MUDr. David Rath

Curriculum Vitae of the Governor

Name: MUDr. David Rath
Born: 25th December, 1965, Prague
Education: Charles University in Prague, Faculty of Medicine, graduated 1990
Secondary School Nad Štolou, Prague

- Member of the Committee for Health-care, Parliament of the Czech Republic
- Shadow Minister of Health of the Czech Republic
- Member of the Municipal Council of Hostivice

Employment history:

2008 – Governor of the Central Bohemia Region – elected 24. 11. 2008
2006-2009 – Head of the Committee for Healthcare, Parliament of the Czech Republic
2005-2006 – Minister of Health of the Czech Republic
2000 – Internist medical doctor, Paracelsum, s.r.o.
1997-2003 – ZS ASČR Kralupy – rescue service medical doctor and head medical doctor
1992 – Specialisation in acute medicine – internal clinic FN Motol
1992-2008 – Charles University in Prague, 2nd Faculty of Medicine, university teacher

1991-1992 – Study stay at internal clinic IKEM (Institute of Clinical and Experimental Medicine), Prague
Organisations:
1998-2005 – President of Czech Medical Chamber

1995-1998 – Chairman of LOK (Trade Union of Doctors in the Czech Republic)
Hobbies: Golf
Languages: English



Regional Authority of the Central Bohemia Region

Presentation of the Central Bohemia Region

With an area of 11 015 square kilometres, the **Central Bohemia Region** is the largest in the Czech Republic. It surrounds the capital City of Prague from all directions and also has its administrative seat in the capital. Thanks to its close connections with the capital city, a huge economic potential and a dense transport network, the Central Bohemia Region is one of the major regions in the Czech Republic. However, it is also an area with a rich history and a cultural heritage of unprecedented scope. The largest number of cultural monuments is to be found in the town of Kutná Hora. Its historic centre was – together with the Church of St. Barbara and Church of the Assumption of the Virgin in Sedlec – added to the UNESCO World (Cultural and Natural) Heritage list in 1995. The landscape in the Central Bohemia ranks among the most diverse and tourists find a few highlights here. Křivoklátsko (the area around the Křivoklát Castle) is the most valuable area for natural scientists. It was proclaimed a UNESCO biosphere reserve in 1977. Kokořínsko (the area around Kokořín Castle) boasts the most beautiful landscape but there are other places and areas here that invite a visit – such as Český kras (Bohemian Karst), Blaník and

its vicinity and Český ráj – one of the UNESCO geoparks since 2005. The Central Bohemia Region ranks among the most developed industrial areas in the Czech Republic. It is both industrial and agricultural region. On its territory, one of the most fertile areas is situated and many important companies are based in the region (for example Škoda Auto, a.s. in Mladá Boleslav, Toyota Peugeot Citroën Automobile Czech, s. r. o. (TPCA) in Kolín-Ovčáry, AERO Vodochody a.s. etc.). The tradi-

onal industry includes engineering, chemical, food, printing, ceramic and glass industries. Besides the traditional professions, new challenging professions and services are being developed successfully. The Central Bohemia Region supports the development of science, research, innovation and knowledge economics. Major transport routes cross the region. The Central Bohemia Region is a unique and burgeoning region with a great potential for further development.

Basic Data

Area:	11 015 km²
Population (as at 30.9.2010):	1 264 978 inhabitants
Proportion of the Czech Republic's population (as at 31. 3. 2010):	11,9 %
Population density (2010):	114,8 inhabitants/km²
Number of municipalities:	1 145, of which 80 towns
Proportion of town population (2009):	54 %
GDP in market prices (30.11. 2010):	393 223 mil CZK
GDP per capita (2009):	317 199 CZK
Proportion of the GDP of the Czech Republic (in 2009):	10,8 %
Exports (in 2009):	487 340 mil CZK
Average monthly wage (31.3. 2010):	23 186 CZK
Unemployment (as at 28. 2. 2011):	7,78 %
Počet hostů v hromadných ubytovacích zařízeních (2010):	631 544

Není přeloženo

Education in the Central Bohemia Region

The Central Bohemia Region ranks among those regions with the highest number of educational institutions. In 2010 a total of 1, 237 schools and school facilities administered by various bodies (see the Table) were registered in the region. 423 kindergartens, 467 elementary schools (including 228 elementary schools with kindergarten), 148 secondary schools and colleges, 69 school facilities including facilities for leisure time and 53 elementary art schools operate in the region. Recently the financial support has also focused on secondary technical schools by building new workshops and technical classrooms and by supporting their students in a form of scholarships. The Central Bohemia Region supports building new elementary schools and kindergartens as well as reconstructing other schools through grants from the Town and Municipalities Development Fund and European grants amounting to hundreds of millions of crowns a year. Through grants from the Sports, Leisure and Primary Prevention Fund which amount to tens of millions of crowns, the region supports non-profit and other organisations dealing with leisure activities of young people.



Elementary school in Hořovice

Bodies administering schools and school facilities in the Central Bohemia Region (2010)

Administering body	Number of schools
Central Bohemia Region	193
Municipalities	951
Private entities	75
Churches	11
Ministry of Education, Youth and Sports	7
Total	1 237

Medical care

The Central Bohemia Region offers its inhabitants a dense network of medical facilities founded by various subjects. They provide medical care from out-patients, intern or diagnostic to preventive, complementary or special care in the form of a rescue service.

The Central Bohemia Region is the founder and at the same time sole owner of five joint stock companies – hospitals (Regional Hospital in Příbram, Kolín, Kladno and Mladá Boleslav and, further, Rudolph and Stephanie Hospital in Benešov) which form the basic network of facilities that provide acute and subsequent intern care.

The Central Bohemia Region has also made major changes in the area of the rescue service, which directly has almost forty stations. For the rescue service in order to be able to reach all destinations within 15 minutes many new stations



Operating theatre in Kladno hospital

were created and the vehicle fleet was modernised.

The quality of medical care would not be

possible in the Central Bohemia Region without support from the region.

Overview of medical facilities in the Central Bohemia Region

Type of medical facility	Number of facilities
Intern medical facilities	45
Out-patients medical facilities	2 605
Medical facilities providing pharmaceutical care	254
Medical rescue service stations	36
Total	2 940

Social sphere

The Central Bohemia Region is creating a social services system which should guarantee the quality of the services provided and their availability to everyone. On its territory, the Central Bohemia Region operates most of the residential social services and ranks first in terms of their number in the Czech Republic. This mainly concerns pensioners' homes, special homes, homes for the handicapped, protected homes, weekly social welfare institutions. Further, the regional allowance organizations also provide a professional social counselling (mainly, within the framework of Family, marriage and interpersonal relations Rakovník and its detached offices), social welfare institutions, support for independent living, asylum homes, mid-way homes, intervention centre, therapeutic community, domiciliary services, relief services, social activation services for elders and handicapped, social rehabilitation and within the framework of the medical facilities and social services provided in inpatient medical facilities. Overview of the social services provided by the allowance organizations of the Central Bohemia Region (see table).

The huge scope of social services would not be possible without a regional support. The region establishes several

tens of allowance organisations which directly provide social services and further also regularly endow grants within the framework of the Humanitarian Fund. The region uses this fund to significantly subsidise the providers of social services to the citizens of the Central Bohemia Region.

tarian Fund. The region uses this fund to significantly subsidise the providers of social services to the citizens of the Central Bohemia Region.

Pensioners home in Unhošt



Social services provided by the allowance organizations of the Central Bohemia Region

Type of facility	Type of complex services
Pensioners homes	They provide comprehensive residential service for persons with reduced self-sufficiency, mainly for reasons of age
Special homes	They provide comprehensive residential services to persons with reduced self-sufficiency, mainly for reasons of chronic mental illness, dependence on habit-forming substances, to persons with various types of dementia, and the like.
Homes for the handicapped; Protected dwelling; Weekly social welfare institutions	They provide comprehensive residential service for persons with reduced self-sufficiency, mainly for reasons of handicap
Social welfare institutions	They provide out-patients services to persons with reduced self-sufficiency, e.g. for reason of age or handicap
Asylum homes	They provide transitional residential services to persons in unfavourable social situations
Midway homes	They provide residential services, mainly to persons aged up to 26 that are leaving school for performance of institutional care
Intervention centres	They provide services to the target group of persons endangered by domestic violence
Professional social counselling	Service provided with orientation on the needs of individual social groups
Relief services	It provides field, non-resident or residential provision of the service to persons with reduced self-sufficiency for reason of age, chronic illness or health handicap, who otherwise are cared for in their natural social environment.
Support for independent dwelling	The field service provided to persons with reduced self-sufficiency, mainly for reasons of handicap
Social activation services for elders and handicapped persons	This concerns field and non-resident services provided to persons of pension age or handicapped persons endangered by social exclusion
Social rehabilitation	This concerns a set of specific activities targeted at attainment of personal self-reliance, independence and self-sufficiency
Therapeutic communities	Provides residential services for addicted persons or persons suffering from chronic mental illnesses
Domiciliary services	The field or non-resident service provided to persons with reduced self-sufficiency, mainly for reasons of age, handicap, and the like

Transport

The Central Bohemia Region has one of the most dense and also most congested transport networks in the Czech Republic. Main roads and railways to the Czech metropolis run through its territory. About three quarters of the Elbe-Vltava marine route that is the only one in the country with national and international marine traffic also runs through the territory of the Central Bohemia Region.

Public transport in the Central Bohemia Region is provided by means of 1 000 bus connections and more than 1 700 train connections everyday on 53 railway lines. The Central Bohemia Region has already started an integration of public transport into a single transport service system. This should be fully functional at the latest in 2015. It will introduce easier fare payment for the travellers, but mainly give them a larger number of stations, new barrier-free connections or shorter waiting time for connections. Within the framework of raising the standard of railway transport, reconstruction of the international railway corridors is just in progress.

The region is making an effort to reduce the ecological burden. For this reason, it has made plans to establish additional

P+R parking lots and build circuit and connecting roads including city by-pass roads. At the same time, the Central Bohemia Region supports the develop-

ment of bicycle transport. Since 2004 130 kilometres of new bike trails have been built.



Railway station Hostivice

Regional development – tourism

The Central Bohemia Region has a great potential in tourism based on the natural and cultural historical assumptions. The attractive tourist locations are all over the region. Tourism in the Central Bohemia Region is influenced by the proximity of Prague as the main tourist destination in the Czech Republic, which in some cases can be interpreted as an advantage. The offer is being developed in those aspects of

tourism that target various types of tourism (hiking, cycling, aqua); discovery tours (cultural, historical, technical and the like); recreation tourism; rural tourism and agro tourism (including hippo tourism); tourism oriented on sports utility; congress, incentive and commercial tourism. Every year, the Central Bohemia Region allocates substantial amounts to this area also within the framework of the

Central Bohemia Region Tourism Fund and business support. The importance of tourism for the development of the region is already currently unquestionable. Among the popular destinations for tourists and visitors of the Central Bohemia Region is mainly the historical city of Kutná Hora, Lázně Poděbrady and the castles and chateaus of the Central Bohemia Region.



Golf course in Karlštejn

Culture and monument preservation

The Central Bohemia Region is significantly involved not only in the preservation of the rich cultural heritage in its territory, but also supports current cultural events.

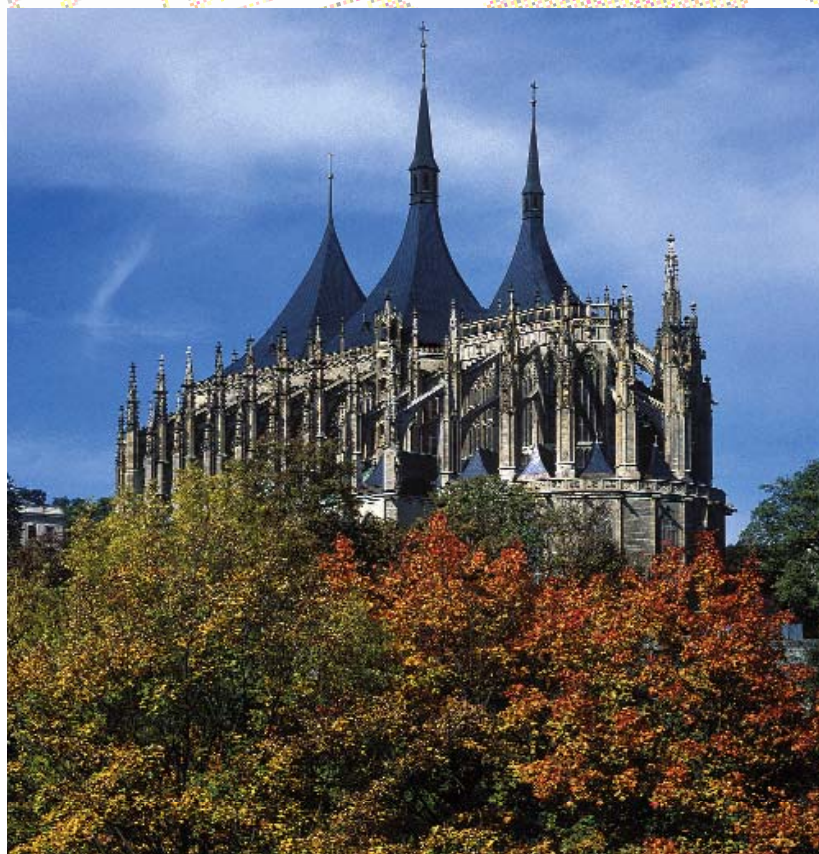
Today, more than 4 200 real estate cultural monuments, 28 national cultural monuments and 77 archaeological, rural and urban monument reservations or zones are in the territory of the Central Bohemia Region. The most important of them are the historical core of Kutná Hora together with the Cathedral of St. Barbara and the Cathedral of the Assumption of the Virgin Mary in Sedlec and, further, the historical centre of Prague or the park and the castle in Průhonice.

The past of the Central Bohemia from the prehistoric era to the modern period is mapped by an extensive archaeological, homeland study, historic, art and naturalistic collections which are deposited in many museums, galleries and The Central Bohemia Region itself is currently a founder of ninety significant cultural institutions. Furthermore, there are also three open-air museums in which the region is preserving valuable folk architecture. Their expositions at the same time make it possible to develop folklore activities or present folk crafts. And, further, two mining open-air museums: Mayrau and Březové Hory. The prominent

place is reserved for the Gallery of the Central Bohemia Region which is the second largest gallery in the Czech Republic.

Eminent artists, musicians and men of letters such as Antonín Dvořák, Karel Čapek, Ota Pavel and others are linked to the Central Bohemia Region.

Cathedral of St. Barbara in Kutná Hora

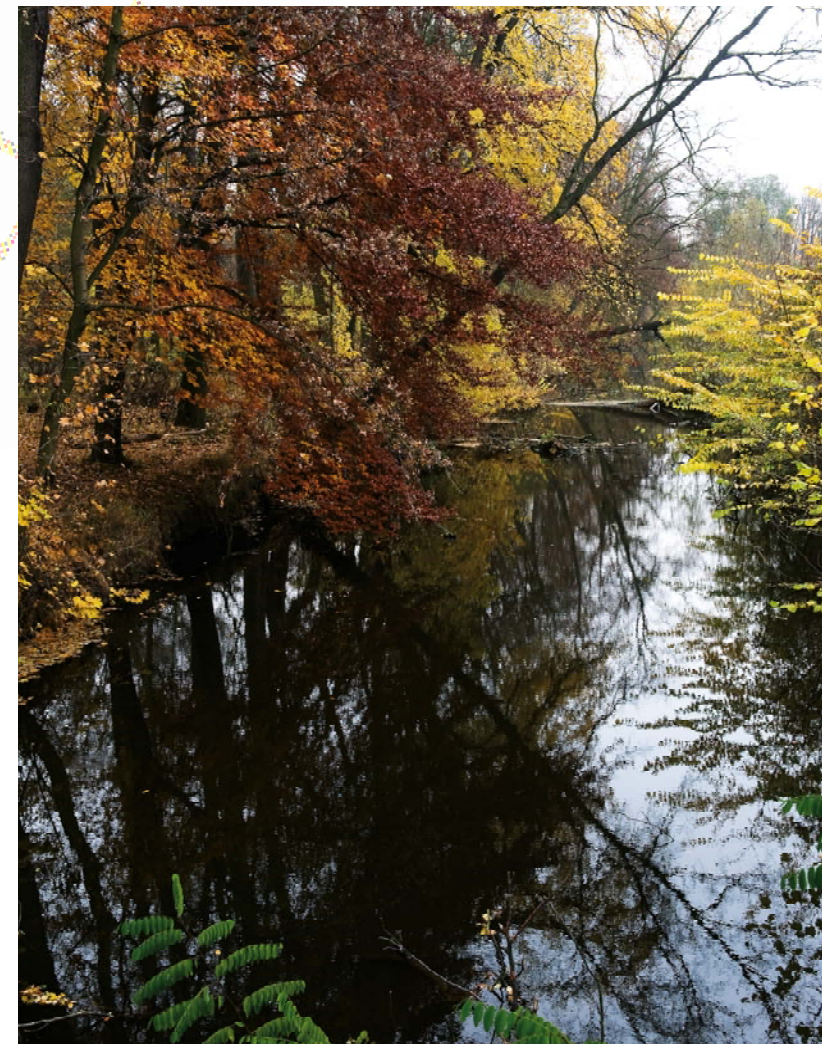


Environment

The landscape of the Central Bohemia Region is in comparison with other regions highly variegated; it has diverse fauna and flora on a relatively small area. The Central Bohemia Region to date has declared 147 small protected areas and 17 natural parks. Last but not least, the Central Bohemia Region is also taking care of 80 designated areas of European significance.

An integral part of the protection of the environment is also the system for disposal of generated waste. Highest emphasis is placed on communal waste and separate collection and grading of its usable elements.

The Region establishes new natural parks and does not allow building new logistics centres which occupy arable soil of the highest quality.



Mělník Park

Research, development, innovation

The Central Bohemia Region economically ranks among the most significant regions in the Czech Republic. Besides the traditional professions, new challenging professions and services are being developed successfully. The Central Bohemia Region supports investments in prospective professions with high value added, science, research and strategic services. Support of research, development, innovation and development of knowledge economics ranks among the priorities of the Central Bohemia Region. Many major companies, research institu-

tions, research and development centres, several institutions of higher learning and branches of detached centres of institutions of higher learning and universities are based in the region. Many scientific and technical parks and several clusters are operational in the territory of the region. The region offers a wide range of investment opportunities. This support prefers brownfield projects to “green-field” investments. With the support of the region, the municipalities are taking care of the offer and presentation of their industrial and development zones to

Czech and foreign investors in the interest of expanding economic activities in the region, creation of new jobs and support for the development of knowledge economics. Conditions are being created for the collaboration of scientific and research institutions with the business sector and for transfer of scientific knowledge to practice. The region is a partner in big innovation projects, e.g. the prestigious international laser centres ELI and the Biotechnological and biomedicine centre of the Academy of Sciences and Charles University BIOCEV.

International laser centre ELI



Foreign co-operation

The Central Bohemia Region finds it important to co-operate not only with the European Union, but also with other regions throughout the world. Therefore, since its establishment the region has pursued good international relations

that would be beneficial to the citizens of the region.

The Central Bohemia Region signed its first international agreement with the French Burgundy region in 2001. In 2003, a four-party statement on co-operation

was signed involving Central Bohemia, Burgundy, the Opole Voivodeship in Poland and Rhineland-Palatinate in Germany. This so-called Network of 4 Regional Partners was, at the time of its establishment, the first project associating participants from member and candidate countries of the European Union. The other partner regions of the Central Bohemia Region are:

- Västra Götaland – Sweden
- Venice Region – Italy
- Sichuan Province – China
- the Mazowieckie Voivodeship – Poland
- the Moscow region – Russian Federation
- Bratislava Region – Slovakia.

The Central Bohemia Region also finds it important to co-operate with the European Union. Therefore, the official Central Bohemia Region Brussels Office was opened in 2004, through which the region is trying to establish a strong position within the European Union. At the same time, the Brussels Office helps the region to acquire money from European funds and entices foreign tourists and potential investors to the region as well.

Co-operation with European regions is performed primarily in the sphere of culture, education, sport, tourism and regional development.



The Governor David Rath with the Prime Minister of Brandenburg Matthias Platzeck